

# *101st Annual Yorktown Grange Fair*

**FRIDAY, SEPTEMBER 5 – SUNDAY, SEPTEMBER 7, 2025**

## *Moo-ving into the Next Century*

### **General Information:**

The fairgrounds are located at 99 Moseman Road, Yorktown Heights.

Mailing address:           **Yorktown Grange Fair  
99 Moseman Road  
Yorktown Heights, NY 10598.**

Please check our website for specific events and times.

### **General Rules:**

Participation in these contests does not provide free entry to the fair.

1. The Yorktown Grange Fair will exercise due caution in safeguarding exhibits but will not be responsible for loss or damage to individual exhibits.
2. Ribbon and rosette awards will be given in all sections and classes based on the judge's decisions.
3. Decision of the judges is final.
4. Absolutely no exhibits are to be removed before 6:00 pm on Sunday (9/7/25) NO EXCEPTIONS.
5. Ribbons will be mailed only if you leave a stamped self-addressed envelope.

If you need further information, please contact:

Yorktown Grange Fair Office

[www.yorktowngrangefair.org](http://www.yorktowngrangefair.org)

If you would like to volunteer to help at the fair or help plan next year's fair, please contact us.

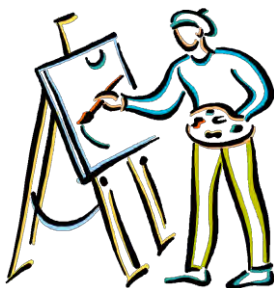
**THANK YOU TO ALL OF OUR FAIR EXHIBITORS  
FOR HELPING TO MAKE THE YORKTOWN GRANGE FAIR A  
SUCCESS.**

# *All Media Art Show*

**Drop off:**        **Wed September 3rd 5:30 pm – 8:00 pm**  
                         **Thursday September 4th 5:30 pm – 7:00 pm**

1.        **ALL AGES** are eligible to enter ***All Media Art*** this year.
2.        Limit 2 pieces per entrant.
3.        All artworks must have been completed in the last 3 years.
4.        Oil, Acrylic, Watercolor, Pastels, etc. accepted.
5.        No Sculptures at this show please.
6.        Please have all work framed, clean and ready for hanging (no free-standing objects).
7.        All exhibits and ribbons must be picked up Sunday (7th) after 6:00 pm.

Please keep in mind this is a family-oriented show and the Grange Fair reserves the right to not accept any art we feel may be inappropriate for the Grange.



# *Baking Contest*

**Director: AnnMarie & Donna**

## **CONTEST RULES**

1. Paper plates should be used when possible. We cannot guarantee plates will be returned.
2. All entries must be from scratch. No package mixes will be accepted except for the Cake Decorating Class.
3. After judging is completed, all items will be displayed; and some may be auctioned at the Grange Auction on Sunday night in the Produce Tent.



## **THURSDAY JUDGING**

All entries for Thursday's contest should be dropped off as follows

Wed September 3rd for cookies, breads, and non refrigerator items  
between 5:30 pm-7:30 pm

Thursday September 4th for cakes and all baked goods  
between 5:00 pm and 7:00 pm

Judging begins Thursday September 4th promptly at 7:30 p.m. and is closed to the public.

### **CLASS I**

#### **Canned**

Please submit 2 jars - 1 for tasting and 1 for display

Section 1. Jams and Jellies

Section 2. Pickling

Section 3. Salsa

### **CLASS 2**

#### **Chocolate**

Section 4. Chocolates – Filled/Covered/Clusters (10/plate)

Section 5. Molded Chocolate Lollipops (10 to a plate)

Section 6. Fudge – Plain or with nuts (10 to a plate)

### **CLASS 3**

#### **Cakes - All**

Section 7. Coffee Cakes – Crumb/Pound/Bundt/ other

Section 8. Cupcakes, all kinds (6 to a plate)

Section 9. Brownies – Favorite Recipe (10 to plate)

Section 10. Muffins

### **CLASS 4**

#### **Cookies**

Section 11. Cookies (All) (10 to a plate)

### **CLASS 5**

#### **Decorating**

Section 12 : This year's theme

*“Moo-ving into the Next Century”*

#### **Rules**

- All entries must be comprised of real cake.
- Cakes can be stacked or tiered.
- Shaped or carved cakes, 2-D or 3-D cakes and sculptures are allowed. Any sugar media or technique may be used.

### **CLASS 6**

#### **Pies**

Section 14. Pies Fruit

Section 15. Pies Other

Section 16. Cheese - All

### **CLASS 7**

#### **Breads**

Section 17. Breads/Rolls/Biscuits (rolls/biscuits 6 to a plate)

Section 18. Breads – Vegetable ( ex Zucchini, Squash, Banana)



# *Produce Show*

**Director: John Bell**

## **\*\*\*\*RULES FOR PRODUCE CONTEST\*\*\*\***

1. Entries will be accepted in the Jerry Mulchay Memorial Building (Barn):

**Thursday, September 4: 6:00 – 9:00 pm**

**Friday, September 5: 7:30 – 9:00 am.**

2. Exhibitors must **legibly** print the name and variety of each entry on a supplied entry card with the correct number of entries on each plate. Please ensure your name and town are clearly printed as well.
3. Judging will begin at 9:00 am on Friday (9/5). The public is not allowed in the barn during judging. The barn will reopen as soon as possible after 12 noon.
4. The exhibitor must grow all entries.
5. All entries become the property of the Yorktown Grange Fair.
6. Each entry will be judged independently and according to the standard of excellence for that particular variety. It is important that your entry is correctly named as to species and variety. The judges will also be looking for table quality, and uniformity in color and size, not oversized or over-ripe. Please: Read descriptions in seed catalogs and on seed packets.
7. Entries should be cleaned but not polished.
8. The decision of the judges is final.
9. Containers used in special collections must be picked up between 5 to 7 pm on Sunday (9/7). They should be labeled with your name if you are picking them up. We are not responsible for any containers that are lost or damaged.
10. Ribbons and awards may be picked up in the barn between 5 to 7 pm Sunday (9/7)

## **SPECIAL RIBBONS**

BEST OF SHOW – PRODUCE  
BEST OF CLASS – TOMATO  
BEST OF CLASS – PEPPER  
BEST OF CLASS – SUMMER SQUASH  
BEST OF CLASS – WINTER SQUASH  
BEST OF CLASS – PUMPKIN/GOURD  
BEST OF CLASS – OTHER VEGETABLE  
BEST OF CLASS – FRUIT  
BEST OF CLASS – HERB  
BEST OF CLASS – ORGANIC  
BEST OF CLASS – VEGGIE CREATURE  
BEST OF CLASS – GARDEN ARRANGEMENT  
BEST OF CLASS – COMMUNITY GARDEN  
BEST OF CLASS – CIVIC ORGANIZATION  
BEST OF CLASS – FARM MARKET  
BEST OF CLASS – COMMERCIAL GROWER

**The Best of Show winner will receive a \$100 gift certificate.**

## **SECTION I – VEGETABLES and FRUIT**

### **DIVISIONS:**

Youth - up to Age 11

Junior - Ages 12 - 17

Adult - Ages 18 and over

<b># on Plate</b>	<b><u>Vegetable or Fruit</u></b>
5	Bean pods (wax, snap, pole, lima, dried, etc.)
3	Beets (trim tops to 1"0)
1	Broccoli head
1	Broccoli, small heads in a bunch 5" in diameter
5	Brussels Sprouts
1	Cabbage (head)
3	Carrots (trim tops to 1")
1	Celery (bunch)
3	Ears of Corn
2	Cucumbers
1	Eggplant
1	Endive
1	Kale, complete plant
3	Kohlrabi
3	Leeks, leaves trimmed
1	Lettuce (head)
5	Crabapples, Plums or Figs

3	Apples, Pears, Peaches, Quinces, Nectarines
5	Strawberries or other berries
1	Bunch of Grapes (white, red, or black)
1	Melon
3	Okra
3	Onions
3	Parsnips (trim tops to 1")
5	Peas (pods)
3	Peppers all ripe or unripe
5	Potatoes
1	Pumpkin
1	Rutabaga
5	Rhubarb (stalks)
1	Squash small, Acorn, Zucchini, Butternut, etc. (< 10")
1	Squash large, Blue Hubbard, etc.
3	Swiss Chard (leaves)
6	Cherry Tomatoes all ripe or all unripe
3	Paste Tomatoes, all ripe or all unripe
3	Standard Tomatoes, all ripe or all unripe

Herbs, potted plant grown in a pot not less than 1 month

Herbs, 1 or 3 sprigs, without flowers

Miscellaneous – any fruit or vegetable not listed above

New & Unusual Varieties – please attach catalog pictures or information

## SECTION II – HEIRLOOM VEGETABLES & FRUIT

### DIVISIONS:

Youth - up to Age 11

Junior - Ages 12 - 17

Adult - Ages 18 and over

See Section I for how many vegetables or fruits should be on a plate.

### SECTION III – ORGANIC VEGETABLES & FRUIT

#### DIVISIONS:

Youth - up to Age 11

Junior - Ages 12 - 17

Adult - Ages 18 and over

See Section I for how many vegetables or fruits should be on a plate.

Requirements to be met:

1. Organic seed for vegetables
2. Fertilizers – Compost made on site, with added minerals
3. No fossil fuel – derived pesticides

If you used special organic methods, like bio-dynamic, please put that down.

### SECTION IV – VEGGIE CREATURES

#### DIVISIONS:

Youth - up to Age 11

Junior - Ages 12 - 17

Adult - Ages 18 and over

To be made with vegetables, fruit, nuts, and organic materials

### SECTION V – GARDEN ARRANGEMENTS/BASKET

#### DIVISIONS:

Individual

Community Garden

Civic Organization

- A display of vegetables or fruit & vegetables to fill a 3' x 4' space.
- A garden basket or suitable container may be used in the display.
- Produce must have been raised in the exhibitor's own garden, whether home, community garden or plot. Accessories permitted.
- Judged on quality, quantity, and artistic arrangement.

### SECTION VI – FARM MARKET and COMMERCIAL GROWERS' EXHIBITS:

#### DIVISIONS:

Farm Market

Commercial Growers



## The 101<sup>st</sup> Annual

# *Produce Auction*

Will be held in the barn at **7:00 pm on Sunday (9/7/25)**. The auction is the Yorktown Grange Fair Finale. Be sure to come and bid on your fruit and vegetables.

We sincerely appreciate those who generously donated their fruit and vegetables to the Yorktown Grange Fair.





# *Rabbit Show*



Director: Betsy Ackerman

To be a part of the rabbit show you must contact the grange by 8/15//25 at [fairoffice.ygf@gmail.com](mailto:fairoffice.ygf@gmail.com) or (914) 962-3900.

- All animals should arrive at the fairgrounds on FRIDAY SEPT. 5<sup>th</sup> between 2pm and 3pm.
- ALL ANIMALS must be examined by the chairperson before being entered into a cage. Animals showing any sign of illness will be denied entrance to and/or will be removed from the fair premises.
- A \$50 fee is required for entry into the fair. \$25 non-refundable deposit needed upfront to hold your spot and \$25 on arrival which will be returned when you pick up.
- ALL ANIMALS MUST BE A MINIMUM 6 months and must have had a full vet checkup within 30 days of the fair. You must come with a copy of the vet checkup.

## **Rabbit Showing for all:**

4-H and open class

1. Junior Division: 8-12 years of age
2. Senior Division: 13-19 years of age

## **- CONTEST RULES -**

1. All animals must come with enough food and hay for the weekend clearly labeled with the animal's name on it.
2. Junior Youth must submit at least 3 hours of volunteer time in the rabbit area for every day of the fair and parents must submit 1 hour in the rabbit area and 1 hour in another area of the fair for at least 2 days of the fair.
3. Senior Youth must submit at least 3 hours of volunteer time on Friday and at least 5 hours on Saturday and Sunday in the rabbit area. Parents must submit at least 1 hour in the rabbit area and at least 3 hours in another area of the fair for at least 2 days of the fair.
4. Animals who exhibit inappropriate or dangerous behavior may need to be removed.
5. All animals must be appropriately groomed for showing.
6. They can enter in any of the following shows:
  - a. Showing: Junior or Senior Open
  - b. Costume Class: Junior or Senior
  - c. Display, no showing or costume class just be a part of the fair.



# Woodworking

Director: Leif Kwei

## \*\*\*\*RULES FOR WOODWORKING\*\*\*\*

1. Exhibits can be brought to the Grange Hall on the fairgrounds only at the following hours.  
**Wednesday September 3: 5:00 pm – 7:00 pm**
2. Entries must be recently crafted by the exhibitor..
3. Entries should be of manageable size.
4. Articles will be judged based on joinery, finish quality, originality and overall craftsmanship.
5. Judging will take place on Wednesday, September 4 starting at 7:30 pm. No exhibitors will be allowed in the building until judging is completed.
6. Ribbon and rosette awards will be given in all Classes based on the judge's decisions.
7. Decisions of the judges are final
8. The Woodworking Committee will exercise due caution in safeguarding exhibits but will not be responsible for loss or damage to individual exhibits.
9. Absolutely no exhibits are to be removed before 6:00 pm on Sunday, September 7 . !!!! NO EXCEPTIONS !!!!

## **YOUTH DIVISION – 17 and under** **ADULT DIVISION – 18 and over**

Classes will be assigned based on entries

- Class 1. Furniture (chairs, small cabinets, small tables, etc.)
- Class 2. Boxes, Carvings (Marquetry), Turned projects (Bowls)
- Class 3. Toys (Puzzles, models), Whirligigs, etc.
- Class 4. Woodworking Art, Tools or Wood as Art

## EXPERT DIVISION

For those who have been involved in woodworking for many years and wish their work to be judged more critically.



# Flower Show

Director: Rudy Spidaro & Sarah Wilson

***The flower show is open to adults, young people and children interested in plants and flowers.***

## \*\*\*RULES FOR FLOWER SHOW\*\*\*

1. Entries will be accepted on **Thursday (9/4/25) from 5:30 pm to 8:00pm and Friday (9/5/25) from 7:30am to 9:00am ONLY!!!**  
No late entries will be accepted, and you must leave the Jerry Mulcahy Memorial Building at 9:00 am.
2. Judging will start at 9:00am on Friday (9/5/25).  
No one is allowed in the building at that time.
3. Entry cards will be provided and must accompany each exhibit.
4. The exhibitor must have grown container grown plants and all cut flowers for at least 3 months prior to our show.
5. Exhibits are to remain in place until 6:00 pm on Sunday (9/7/25). All plants and ribbons must be picked up Sunday after 6:00 pm.

**YOUTH – up to Age 11**

**JUNIOR – Ages 12 – 17**

**ADULT – Ages 18 & over**



## DESIGN DIVISION

### Section 1. “Yorktown Roads”

For people with or without garden space. Design only with wildflowers from meadows, roadside, etc. from our local area.

### Section 2. “Hometown Wonders”

Arrangement of fresh or dried flowers – not to exceed 5”

### Section 3. “Amber Waves of Grain”

Arrangement of fresh or dried flowers (a little past & future mixture. Use of a prop in addition to container is acceptable).

### Section 4 Grand Old Flag and Our Troops

Pay tribute to our country through flowers and plants.

### Section 5. “Moo-ving into the Next Century”

Use your imagination to highlight this year’s theme using plants/flowers.

### Section 6. Floral Arrangement using commercially grown flowers.



## HORTICULTURE DIVISION - CUT SPECIMENS

### CLASS A - ANNUALS

- Section 1. Celosia – 1 flowering stem
- Section 2. Cosmos – 1 flowering stem
- Section 3. Impatiens – 1 flowering stem
- Section 4. Petunia – 1 flowering stem
- Section 5. Salvia – any color – 1 flowering stem
- Section 6. Snapdragon – 1 flowering stem
- Section 7. Sunflower – 1 flowering stem
- Section 8. Marigolds
  - a. Large - 3 flowering stems
  - b. Dwarf Single - 3 flowering stems
  - c. Dwarf Double - 3 flowering stems
- Section 9. Zinnias – all sizes - 3 flowering stems
- Section 10. Begonias – 1 flowering stem
- Section 11. Ageratum – 1 flowering stem
- Section 12. Nicotiana – 1 flowering stem
- Section 13. Cleome – 1 flowering stem
- Section 14. Geranium – 1 flowering stem
- Section 15. Any other annual not listed – 1 flowering stem



### CLASS B – DAHLIAS (Please put Section and variety on card)

- Section 1. Floral decorative – 1 flowering stem
- Section 2. Cactus Dahlia – 1 flowering stem
- Section 3. Miniature, less than 4" in diameter – 1 flowering stem
- Section 4. Pompom, less than 2" in diameter – 1 flowering stem
- Section 5. Anemone (flowered) – 1 flowering stem
- Section 6. Any other dahlia – 1 flowering stem

### CLASS C – BULBS, CORMS, RHIZOMES, TUBERS except DAHLIAS

1 flowering – Please put a variety of flowers on the card  
for example: Canna, Gladiolas, etc.

### CLASS D – ROSES

1 or 2 flowering stems – Please put variety & name of rose on card For example:  
Hybrid Tea Rose, Miniature Rose, etc.

### CLASS E – PERENNIALS

- Section 1. Chrysanthemum – 1 flowering stem
- Section 2. Dianthus – 1 flowering stem
- Section 3. Coreopsis – 1 flowering stem
- Section 4. Aster – 1 flowering stem
- Section 5. All Other Perennials – 1 flowering stem



### CLASS F – CONTAINER GROWN – SINGLE PLANTS

African Violet

Orchid

Coleus

Any other container grown plant not listed above

### CLASS G – CONTAINER GROWN, MULTIPLE PLANTS

All green

Flowering

More than 1 color foliage

Flowering and foliage



### CLASS H – HANGING BASKETS

Foliage Baskets

Flowering Baskets

### CLASS I – CACTUS

Single plant

More than 1 plant



### CLASS J – SUCCULENTS

Single plant

More than 1 plant



### Youth/Junior DESIGN DIVISION

Section 1. Any Adult Category

Section 2. "Mini-Garden" Using a Microwave Dinner Tray or something similar, using twigs, rocks, small woodland plants, moss (like a Terrarium)

Section 3. Patriotic Display – Use red, white, and blue flowers to create a salute to the USA

Section 4. Terrarium

Section 5. Fairy Garden (see description in adult section)

### Youth/Junior HORTICULTURE DIVISION

Section 1. Any annual taken care of by Exhibitor – 1 flowering stem.

Section 2. Container Grown Plant – taken care of by exhibitor.

Section 3. Any perennial taken care of by exhibitor.

Section 4. Plant grown from a fruit seed.

### EXPERT DIVISION

This division is for the experienced gardener who has entered a flower show(s) and wishes to have some or all of their entries judged more critically. Best of Show as applicable.



**PLEASE SUPPORT THE FLOWER BUILDING!**

**IN ORDER TO HELP PAY FOR THE FLOWER SHOW EXPENSES**  
we will have a Home/Garden Magazine exchange table. Please bring any  
magazines you want to recycle (give away) when you enter your flowers,  
and we will ask people for a donation for each magazine they take.

**Additionally, anyone who has extra plants they wish to donate, kindly bring  
them to the plant sale table. Clay pots, vases, garden tools, etc. are also  
gladly accepted.**

**And please bring your extra flowers (especially dahlias),  
which we will then sell as bouquets.**



# *Lego Show*

**Director: Brian Kretzschmar**

## **\*\*\*RULES FOR LEGO SHOW\*\*\***

**Drop off:            Wednesday, September 3rd 5:30 pm – 7:30 pm**  
**Thursday, September 4th 3:00 pm – 7:00 pm**

Judging will take place on Thursday, September 4th beginning at 7:30 pm. NO ONE will be allowed in the building until judging is completed.

Enter your original LEGO creations, (no kit assemblies).

Limit 3 entries per contestant.

Entries are limited in size to 1 ft. by 2 ft.

### *DIVISIONS*

**YOUTH I – Ages 5 – 7**

**YOUTH II – Ages 8 – 10**

**JUNIOR – Ages 11 – 17**

**ADULT – Ages 18 and over**



### *CLASSES*

A. Vehicle

B. Scenic

C. Characters

D. Fair Theme: *“Moo-ving into the Next Century”*

# *Poultry Show*

Director: AnnMarie Sasso  
willowhillequities@gmail.com  
or (914) 494-6256



*Due to Health Concerns:  
No Poultry from the Public  
will be on Display  
at the Fair this Year*



# Photography Show

Director: Eleanor Kwei

## \*\*\*RULES FOR PHOTOGRAPHY SHOW\*\*\*

**Drop off: Wednesday, September 3rd 5:30 pm – 8:00 pm**  
**Thursday, September 4th 5:30 pm – 7:00 pm**

1. The Yorktown Grange Fair Committee reserves the right to refuse entry of any photos deemed inappropriate to the concept of our fair.

### **\*\*Limit of 1 entry per class\*\***

3. 5x7, 8x10, 11x14, 16x20 (Please have All Large frames over 8x10 wired for Hanging. Small frames 5x7 may have stands attached to them)
4. Only photos will be judged – not frames. Photo classes & divisions are subject to the number of entries - If there are insufficient entries, categories may be combined at the discretion of the judges.
5. Black & White and Color photographs will be judged separately from digitally enhanced photographs.
6. We would like to afford you the opportunity to sell your photographs. If you would like to sell your photograph while it is on display, please let us know at drop off. The Grange Fair receives 25% of all sales. Photos must stay for the duration of the show.

**JUNIOR – Ages up to 11**

**YOUTH DIVISION – Ages 12 – 17**

**ADULT DIVISION – Ages 18 and over**

**ADVANCED DIVISION – 18 and over.** *This level is for the photographer who has entered contests before and has advanced skills in all aspects of photography. Same rules apply. One entry per person per Class.*

Class 1.	(Youth & Adult)	Patriotic Scenes
Class 2.	(Adult Only)	Architecture
Class 3.	(Adult Only)	<u>Water</u>
Class 4.	(Youth & Adult)	Pets and other Animals
Class 5.	(Youth & Adult)	People/Portraits
Class 6.	(Adult Only)	Computer Enhanced Photos
Class 7.	(Adult Only)	Past to Present Grange Fair Photos
"The Special"	(Youth & Adult)	<i>"Moving into the Next Century"</i>



# Livestock Show

Director: Julie Aitchison

To be part of the livestock show you must contact the Grange by 8/15/25 at [jaitchison27@optonline.net](mailto:jaitchison27@optonline.net) or (914) 519-7815

Animals should arrive at the fairgrounds on FRIDAY, SEPTEMBER 5<sup>th</sup> between 10am and 12 noon. All animals must be examined by the Fair Veterinarian upon entering. Any animal showing signs of Ringworm, warts, Pink Eye, Foot Rot, Mange, lice, Caseous Lymphadenitis, Sore Mouth, or any other infectious communicable diseases will be denied admittance to and/ or will be removed from the fair premises.

## **Showmanship Competitions are open to all:**

**Cattle (Dairy & Beef), Horses/Donkeys & Sheep —**  
Junior & Senior Showmanship Classes.

**Goats —**

Novice, Intermediate & Advanced Showmanship Classes.



ALL LIVESTOCK 4 months & older are REQUIRED to be vaccinated for RABIES by an accredited veterinarian at least 21 days prior to the fair and within 1 year of the Fair. Two (2) copies of Veterinarian signed Rabies Certificates must be provided to the Fair Office & Livestock Chairperson by 8/29/2025.

1. All Livestock must be identifiable by a unique ID Tag or tattoo which are matched to their official Rabies & Veterinary Certificates.
2. All Male Livestock must be neutered.
3. Any animal who exhibits inappropriate or dangerous behavior may need to be removed.
4. All animals must be taken care of at least 3 times (3X) a day. If an animal is not properly taken care of, the owner/caretaker will be contacted for care or removal. All animals must be appropriate for showing.

## **HEALTH CERTIFICATE REQUIREMENTS FOR EACH ANIMAL**

### **CATTLE**

Brucellosis—New York State Cattle are eligible for exhibit without test.

Tuberculosis—Originating in a clean herd tested within five (5) years or tested negative within sixty (60) days of the fair. Animals under two (2) years of age are not subject to test. Negative Bovine Viral Diarrhea Persistent Infection (BVD-PI) test.

H.S. Vaccine—Active immunization against Bovine Respiratory Disease (Shipping Fever) Complex (BRDC) not over ninety (90) days and not less than ten (10) days before the fair. Serum or antibody concentrate cannot be used in lieu of vaccination. Health & Vaccination Certificate, including Rabies Vaccination, to be submitted as indicated above.

## **GOATS**

Rabies Vaccination Certificate to be submitted as indicated above.

## **HORSES / MULES/ DONKEYS**

A Certificate of Veterinary Inspection is not required for New York State origin Horses, Mules or Donkeys, but IS REQUIRED for Out-Of-State origin animals.

Negative Equine Infectious Anemia Test (EIA Test or Coggins Test) and Certificate is required for all Horses/Mules/Donkeys 6 months of age & older, and the test sample must have been collected within one year of the fair date for New York State origin Horses/Mules/Donkeys.

A Complete Description of the animal must be on the Test Certificate. Rabies Vaccination is required for all Horses/Mules/Donkeys 4 months and older within 1 year of the fair & not less than 21 days before the fair. If the Rabies Vaccination is included on a EIA Test Record, it must be signed separately by an accredited Veterinarian in addition to the required EIA Test signature. Vaccination & Test Certificates to be submitted as indicated above.

## **LLAMAS /ALPACAS**

Negative Bovine Viral Diarrhea Persistent Infection (BVD-PI) test. Rabies Vaccination & Health Certificate to be submitted as indicated above.

## **SHEEP**

All Sheep must be accompanied by a Health Certificate signed by an accredited Veterinarian identifying the animals to be exhibited, and indicating that the flock of origin, included the Sheep to be exhibited, has been inspected after May 1st of the current year and found free of all contagious infections or communicable diseases. Rabies Vaccination & Health Certificate to be submitted as indicated above.

## **OUT-OF-STATE ORIGIN ANIMALS**

ANY ANIMALS FROM OUTSIDE NEW YORK STATE MUST MEET ALL CURRENT YEAR NEW YORK STATE IMPORT HEALTH REQUIREMENTS AND FAIR REGULATIONS.

PLEASE NOTE: Yorktown Grange Fair Association & all Grange personnel associated with the show assume no responsibility for loss of animals and/or property in case of fire, theft, accident, or Act of God, though every precaution will be taken to avoid these incidents.



# Needlework

**Directors: Elaine & Etta Griffiths**

## **\*\*\*RULES FOR NEEDLEWORK\*\*\***

***The Needlework Competition is open to all ages.  
We encourage everyone to enter their exhibits.  
We appreciate your support.***

### **Drop off:**

**Monday, September 1, Times to be determined**

**Tuesday, September 2, Times to be determined**

### **Rules for Needlework:**

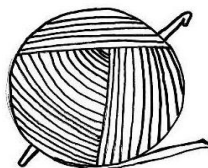
1. One 3x5 index card with name, address, phone number, email, and description of entry, including any notes you may want to share, must accompany each article.
2. Judging will take place after all items have been collected. Entrants are not allowed at the judging.
3. Articles must be in new to excellent condition and completed by the exhibitor between September 2024 and August 2025. No machine-made articles are eligible (except as needed for quilting division). Articles will be judged on both originality and workmanship.
4. All articles must be completed and framed if necessary.
5. Limit 2 entries per person per section for adjudication; additional entries may be included for exhibition.

### **CLASS I – Crocheting**

A ribbon awarded to the best exhibit (if any) in Class I.

#### **Section:**

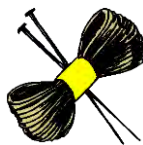
1. Placemats, potholders, and other household accessories
2. Accessories: scarves, shawls, and ponchos, hats, gloves, socks, etc.
3. Purses
4. Sweaters, dresses, and other clothing items
5. Children and infant clothing items



## **CLASS II. – Knitting**

A ribbon awarded to the best exhibit (if any) in Class II.

Sections: Same as Class I.



## **CLASS III. – Needlepoint, Embroidery, Cross Stitch**

A ribbon awarded to the best exhibit (if any) in Class III.

Sections:

1. Samplers
2. Pictures
3. Purses, Pillows, Clothing, etc.
4. Miscellaneous



## **CLASS IV. – Quilt**

A ribbon awarded to the best exhibit (if any) in Class IV.

Sections (by size):

1. Tabletop
2. Baby
3. Lap
4. Bed



## **CLASS V – Afghans**

A ribbon awarded to the best exhibit (if any) in Class V.

## **CLASS VI – Toys**

A ribbon awarded to the best exhibit (if any) in Class VI.